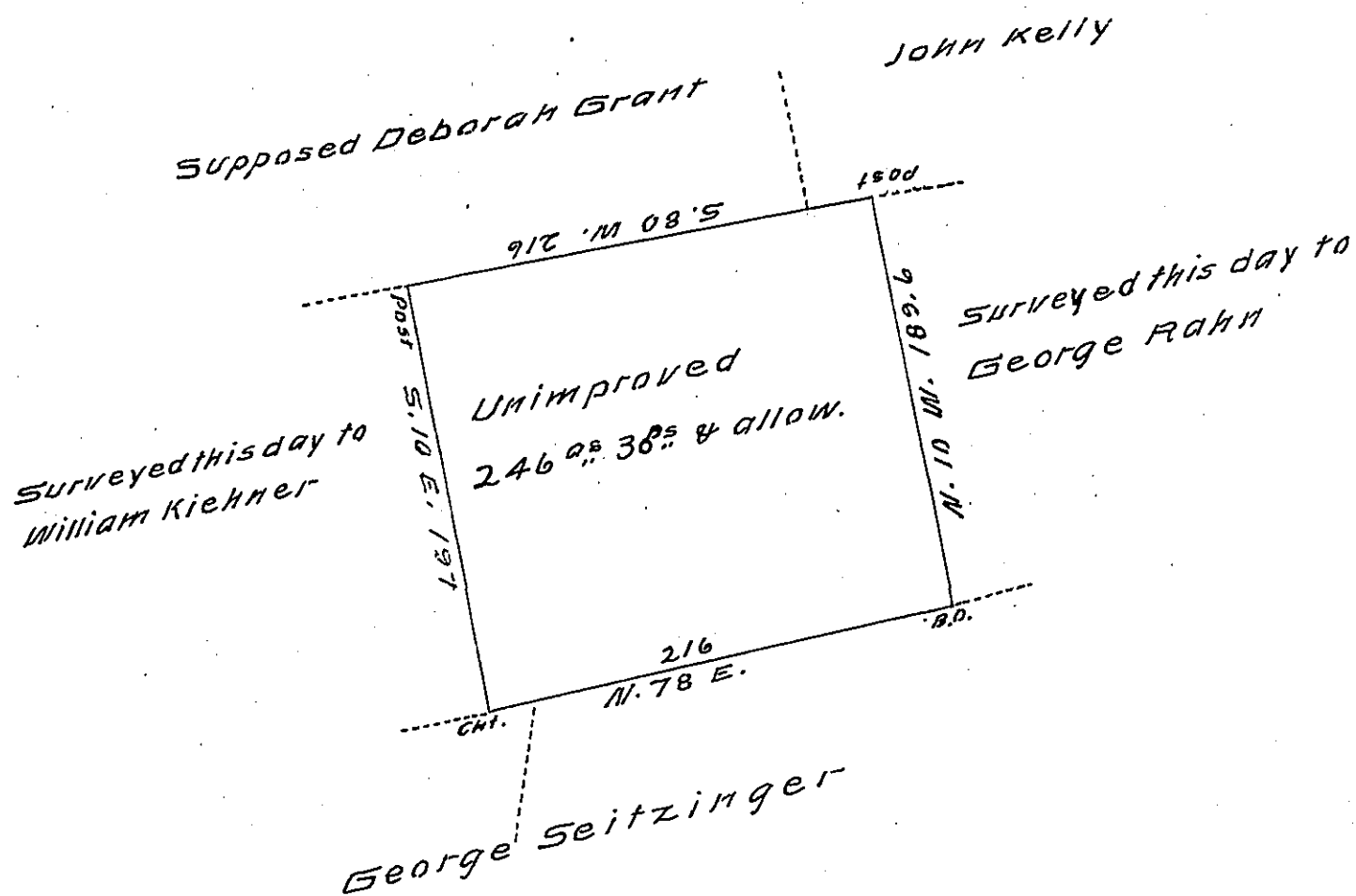


FORM No 1.



Situate in Barry township Schuylkill County containing two hundred and forty six acres and thirty perches and the allowance of six per cent surveyed on the 4th day of November 1829 in pursuance of a warrant dated the 3^d day of September 1829 granted William Kiehner.

F. Lauderbrun, Dep. Sur.

To Gabriel Hiester Esquire }
 Surveyor General of Penn'a }

Schuylkill.

The above land is claimed by the heirs of William Wit-
 HAM Esq^r dec^d late of the borough of Reading in the county
 of Berks.

F. Lauderbrun.

IN TESTIMONY that the above is a copy of the original remaining on file in the Department of Internal Affairs of Pennsylvania, made conformably to an Act of Assembly approved the 16th day of February, 1833, I have hereunto set my Hand and caused the Seal of said Department to be affixed at Harrisburg, this Eighteenth day of January 1908

Henry Houder
 Secretary of Internal Affairs.